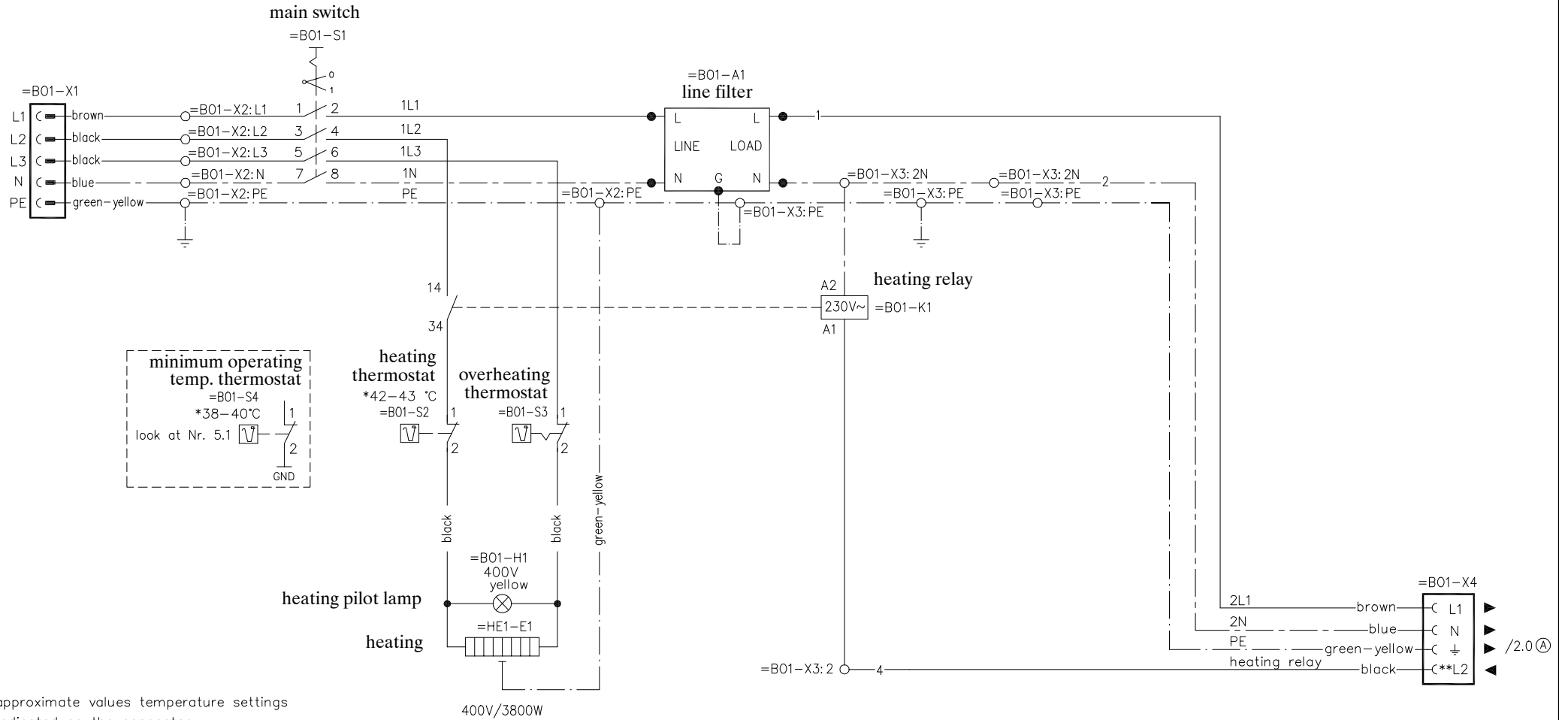


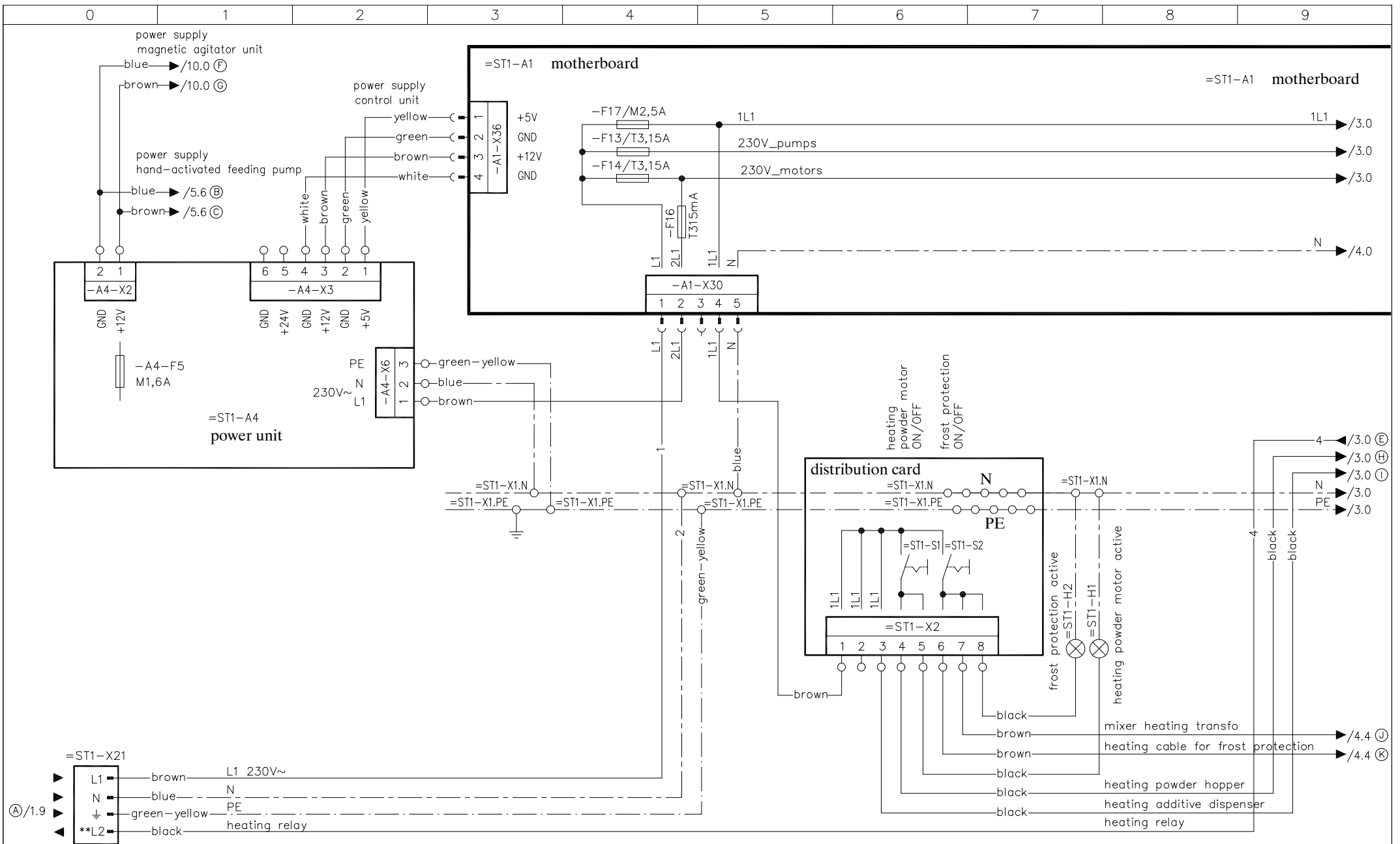
BO1 = boiler 3,8kW

mains connection
400V,3/N/PE/50Hz



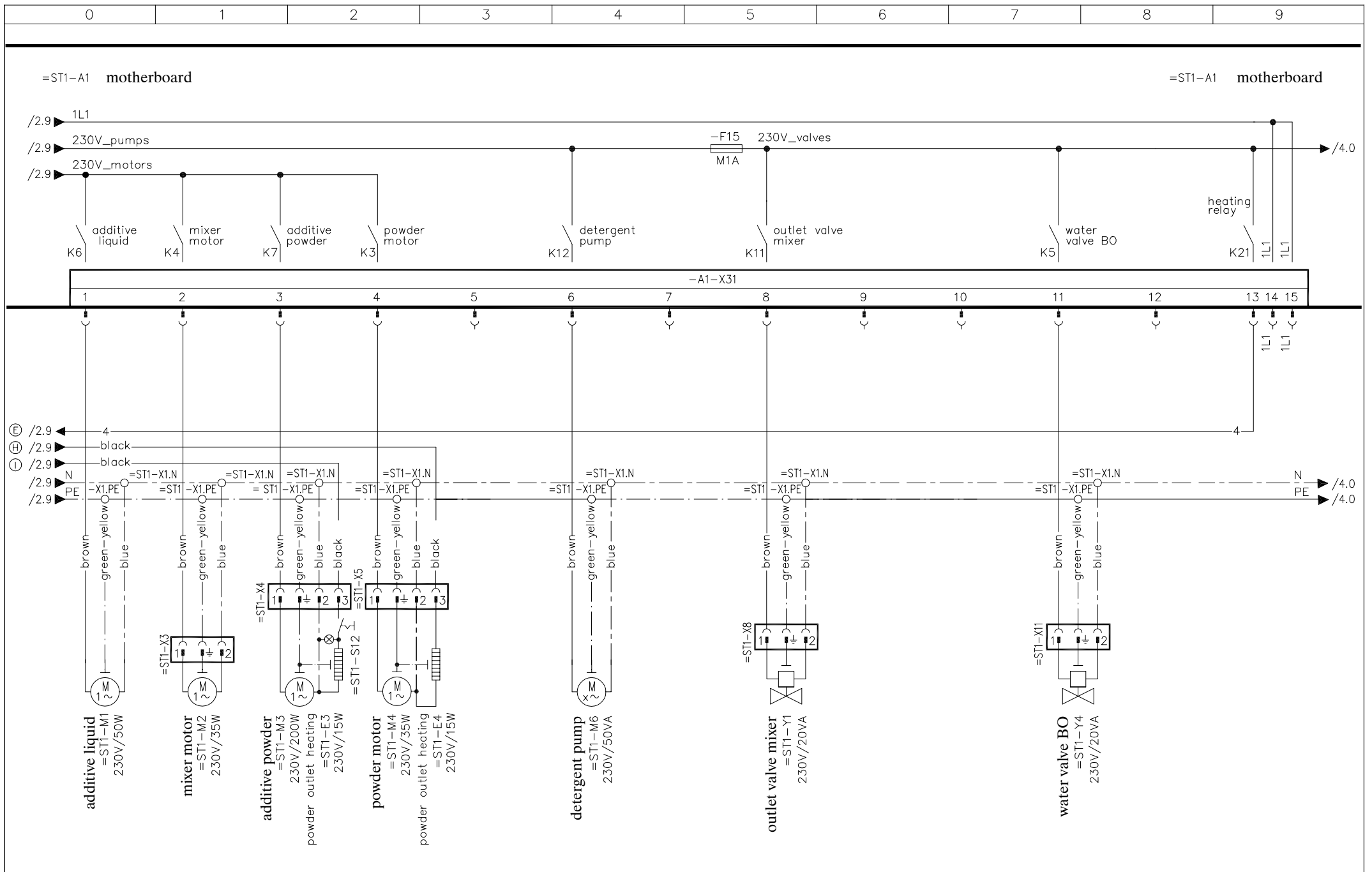
* approximate values temperature settings
** indicated on the connector

				SA2000 with double priority control TAP3-SA3-38-P	Förster Technik GmbH	Zeichnungs-Nr. plan375a	Blatt 1
					gezeichnet	Datum 14.06.00	von 11 Blätter
Änderung	Ind.	Datum	Name	micro-identification	Name Hensler	Versions-Nr. 5	



** indicated on the connector

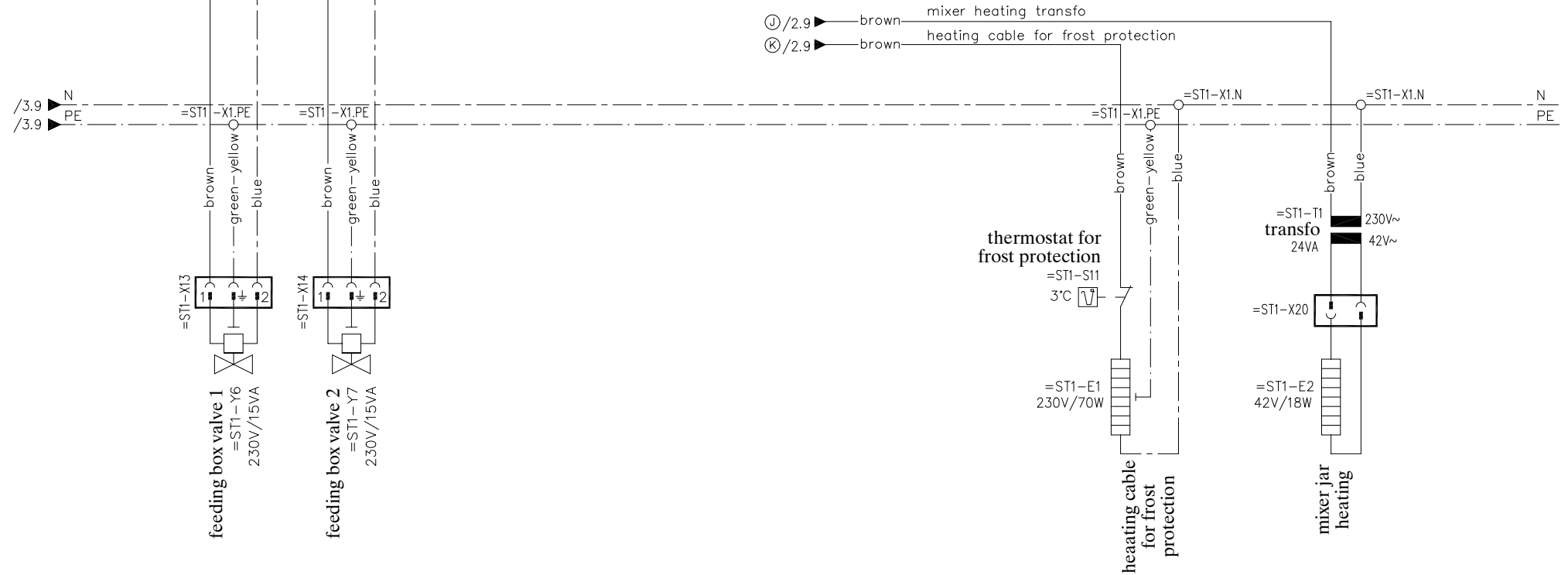
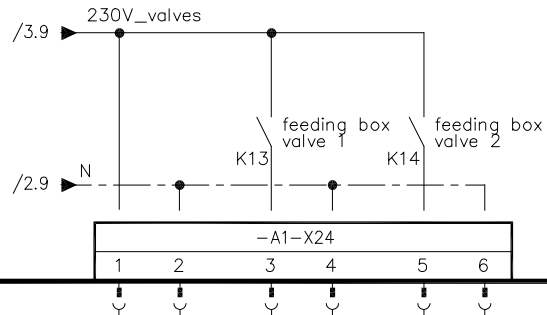
				SA2000 with double priority control TAP3-SA3-38-P	Förster Technik GmbH	Zeichnungs-Nr. plan375a	Blatt 2
					gezeichnet	Datum 14.06.00	von 11 Blätter
Änderung	Ind.	Datum	Name	micro-identification	Name Hensler	Versions-Nr. 5	



				SA2000 with double priority control TAP3-SA3-38-P	Förster Technik GmbH	Zeichnungs-Nr. plan375a	Blatt 3
				micro-identification	gezeichnet	Versions-Nr. 5	von 11 Blätter
Änderung	Ind.	Datum	Name		Datum 14.06.00 Name Hensler		

=ST1-A1 motherboard

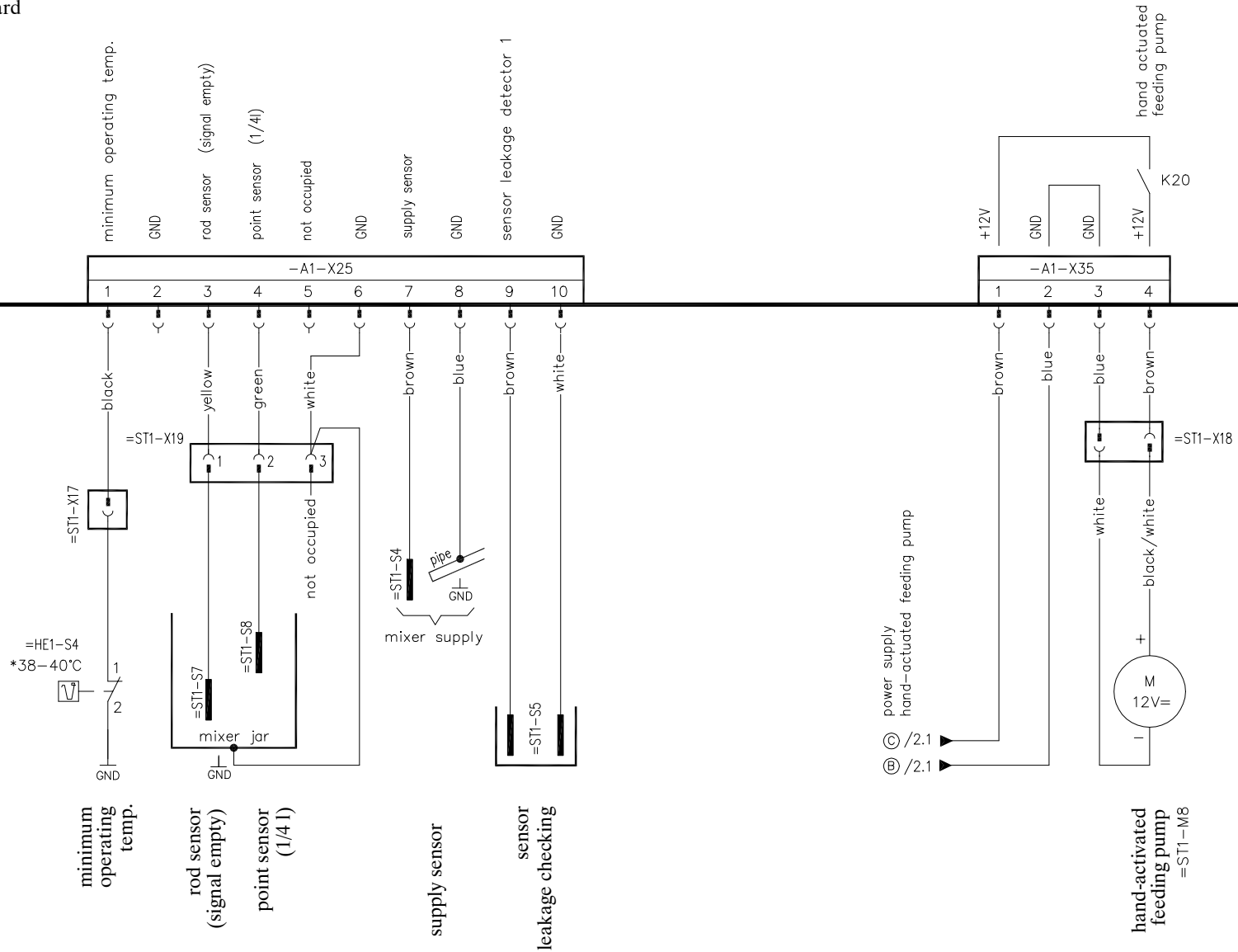
=ST1-A1 motherboard



				SA2000 with double priority control TAP3-SA3-38-P	Förster Technik GmbH	Zeichnungs-Nr. plan375a	Blatt 4
				micro-identification	gezeichnet Datum 14.06.00	Versions-Nr. 5	von 11 Blätter
Änderung	Ind.	Datum	Name		Name Hensler		

=ST1-A1 motherboard

=ST1-A1 motherboard

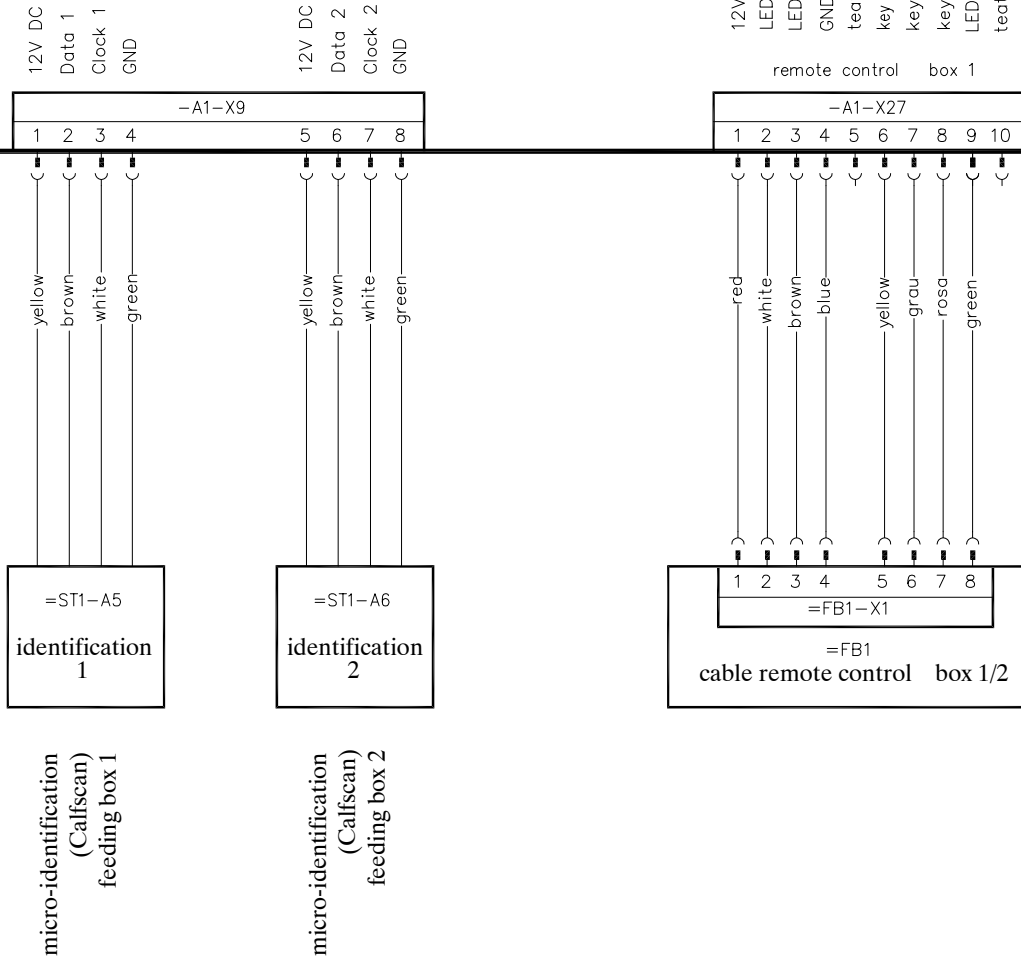


*approximate values for temperature

				SA2000 with double priority control TAP3-SA3-38-P	Förster Technik GmbH	Zeichnungs-Nr. plan375a	Blatt 6
						Versions-Nr. 5	
Änderung	Ind.	Datum	Name	micro-identification	gezeichnet Name Hensler	Datum 14.06.00	von 11 Blätter

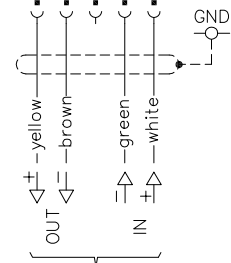
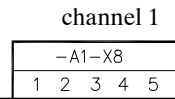
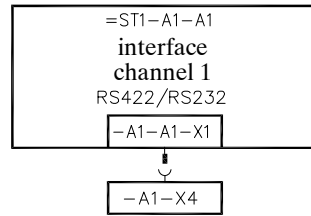
=ST1-A1 motherboard

=ST1-A1 motherboard

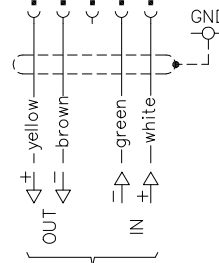
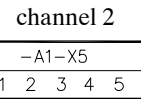
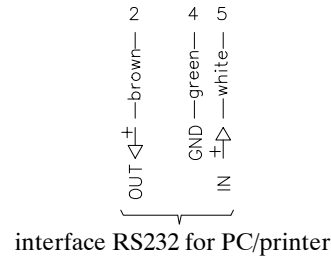


				SA2000 with double priority control TAP3-SA3-38-P	Förster Technik GmbH	Zeichnungs-Nr. plan375a	Blatt 7
						Versions-Nr. 5	
Änderung	Ind.	Datum	Name	micro-identification	gezeichnet Datum 14.06.00 Name Hensler		von 11 Blätter

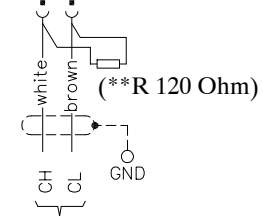
=ST1-A1 motherboard



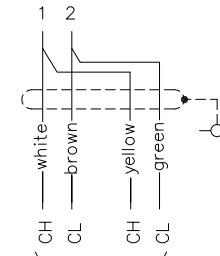
* interface RS422 for PC/printer



interface RS422 for Concentrate feeder 1



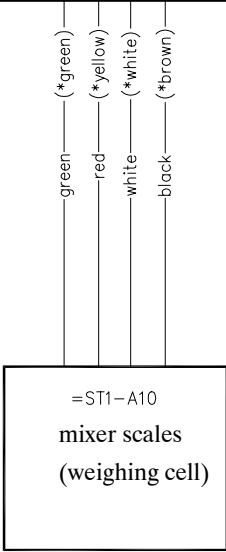
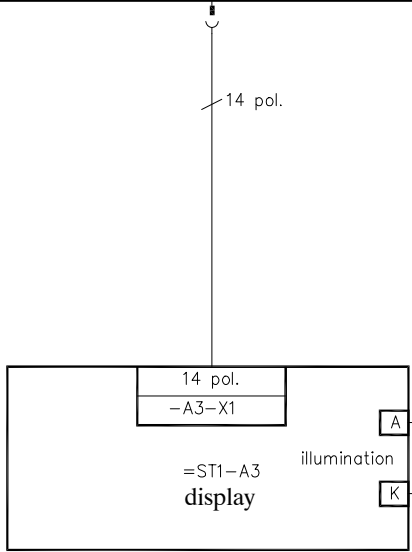
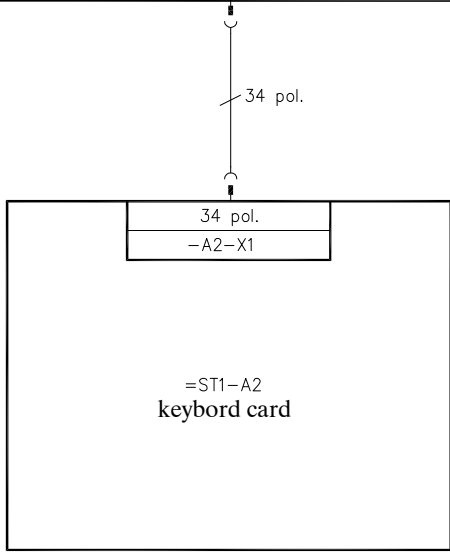
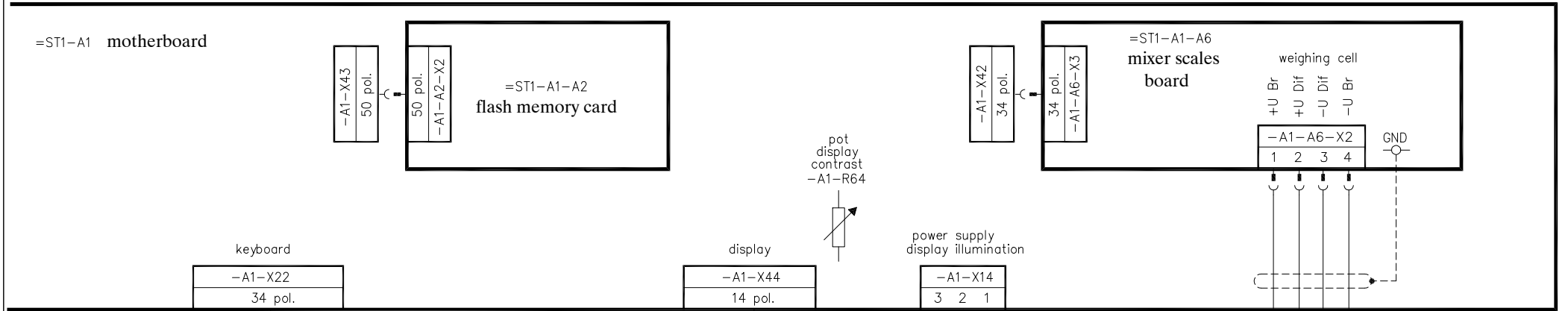
for example half body scales 1/2



for exmple half body scales 1/2 and 3/4

* only with line driver RS422/RS232
 ** depending on network

				SA2000 with double priority control TAP3-SA3-38-P	Förster Technik GmbH	Zeichnungs-Nr. plan375a	Blatt 8
						Versions-Nr. 5	
Änderung	Ind.	Datum	Name	micro-identification	gezeichnet Name Hensler	Datum 14.06.00	von 11 Blätter



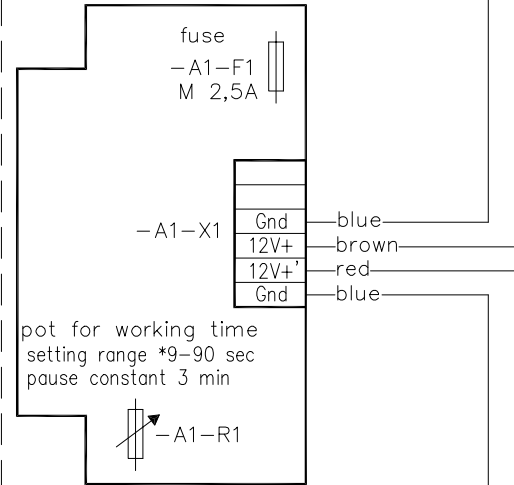
*alternativ colours

				SA2000 with double priority control TAP3-SA3-38-P	Förster Technik GmbH	Zeichnungs-Nr. plan375a	Blatt 9
						gezeichnet	
Änderung	Ind.	Datum	Name	micro-identification	Datum 14.06.00 Name Hensler		von 11 Blätter

Ⓢ /2.1 ► brown
 Ⓢ /2.1 ► blue
 power supply
 magnetic agitator

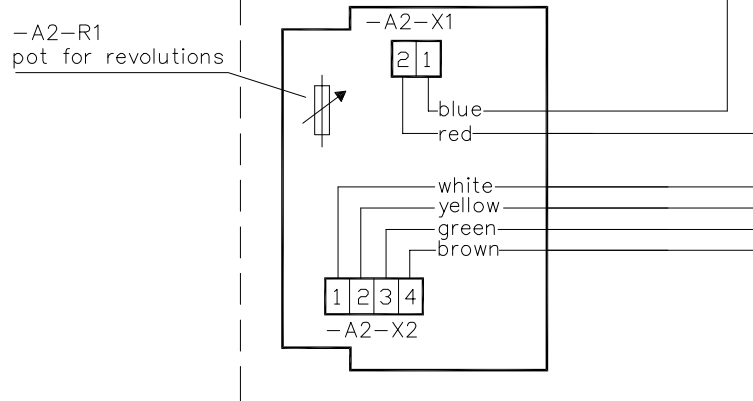
=ST1-A11 magnetic agitator

=ST1-A11-A1 interval board



=ST1-A11-S1
switch
 magnetic agitator ON/OFF

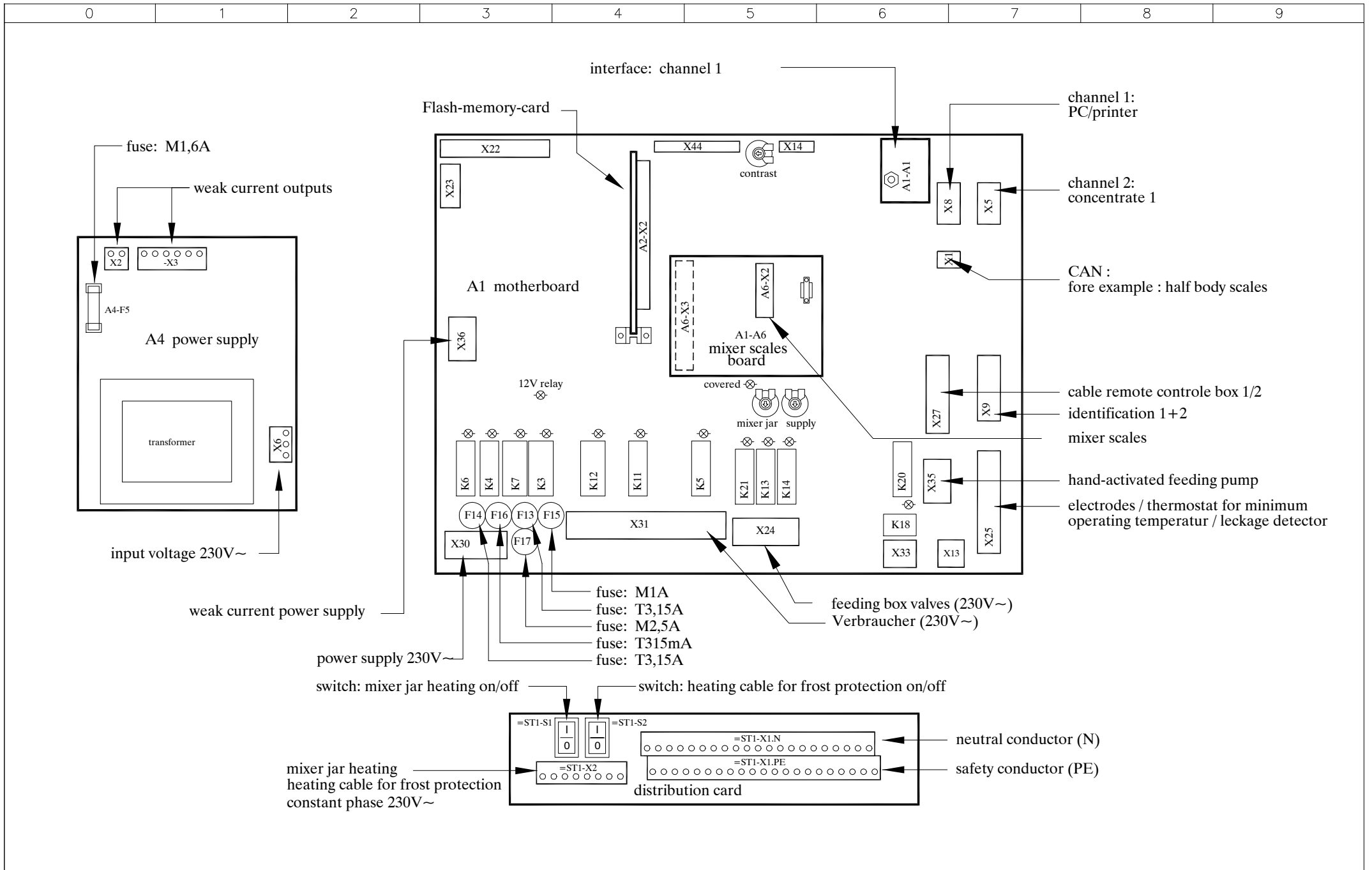
=ST1-A11-A2 revolution control board



=ST1-A11-A3
magnetic agitator

*factory set to 60 sec.

				SA2000 with double priority control TAP3-SA3-38-P	Förster Technik GmbH	Zeichnungs-Nr. plan375a	Blatt 10
				micro-identification	gezeichnet	Datum 14.06.00 Name Hensler	von 11 Blätter
Änderung	Ind.	Datum	Name			Versions-Nr. 5	



				SA2000 with double priority control TAP3-SA3-38-P	Förster Technik GmbH	Zeichnungs-Nr. plan375a	Blatt 11
						Versions-Nr. 5	
Änderung	Ind.	Datum	Name	micro-identification	gezeichnet Datum 14.06.00 Name Hensler		von 11 Blätter